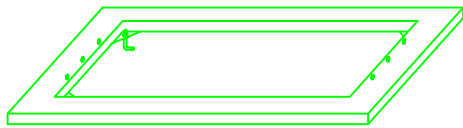
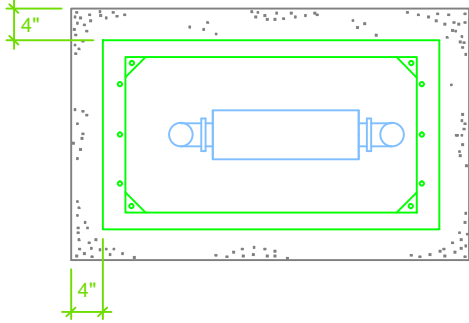


STRONGBOX
SMOOTH TOUCH
LOW PROFILE

TOP VIEW PAD

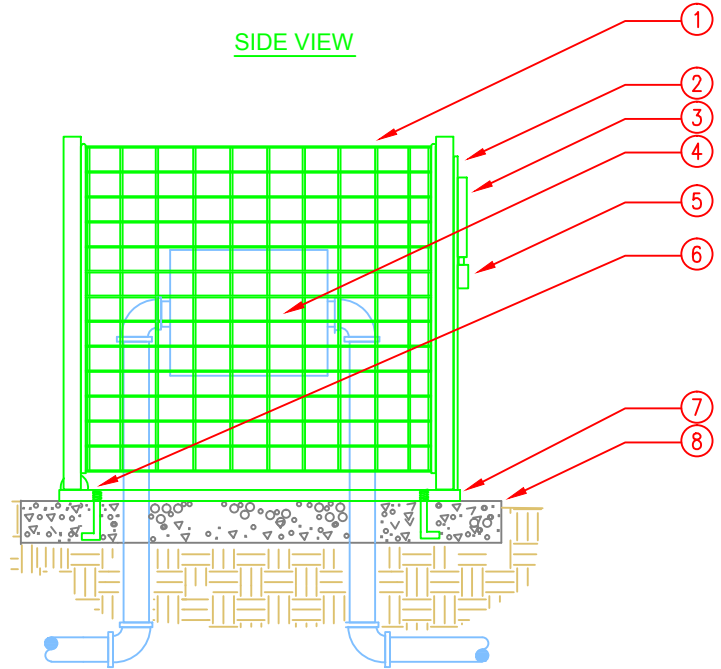


SMOOTH TOUCH ANCHOR BASE.

MOUNTING BASE SECURED IN CONCRETE
WITH $\frac{3}{8}$ " J BOLTS (4 PLACES).

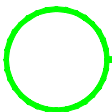
EXISTING CONCRETE CORNERS WILL
NEED TO $\frac{3}{8}$ "x 3" REDHEAD ANCHORS.

SIDE VIEW



LEGEND

1. STRONGBOX SMOOTH TOUCH BACKFLOW CAGE AS SPECIFIED PER SIZE.
2. ENCLOSURE LOCKING SWING DOOR (DOOR MOUNTED TO ANCHOR BASE)
3. PADLOCK PROTECTIVE COVER.
4. BACKFLOW PREVENTER.
5. PADLOCK.
6. ENCLOSURE SWIVEL POINT ATTACHED TO MOUNTING BASE. ENCLOSURE SECURED TO BASE (6 PLACES)
7. ANCHOR BASE MOUNT.
8. POURED CONCRETE BASE, 6" MINIMUM THICKNESS. EXTEND 4" BEYOND OUTSIDE DIMENSIONS OF ENCLOSURE.



SMOOTH TOUCH BACKFLOW COVER

N.T.S

SBBC-xxSS