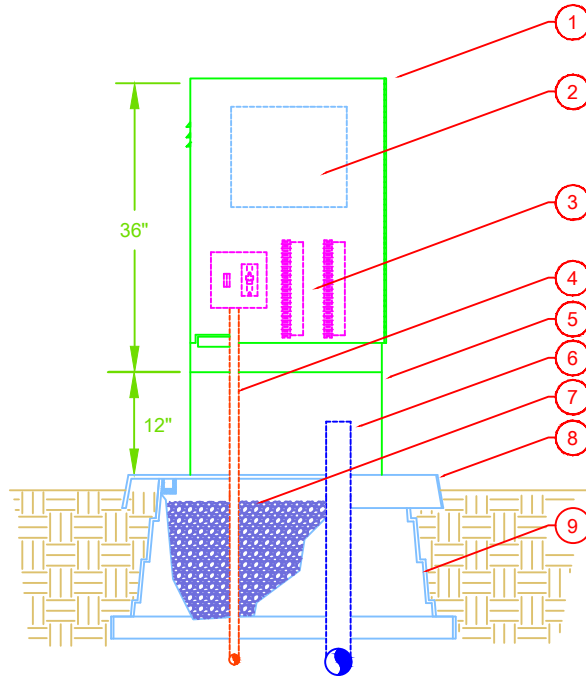
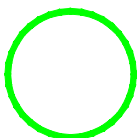


STRONGBOX FRONT ENTRY  
WITH STRONGBOX  
QUICKPAD.



LEGEND

- |  |  |
|--|--|
| <p>1. STRONGBOX ENCLOSURE FRONT ENTRY PN# SB-18SS, SB-24SS.</p> <p>2. AUTOMATIC CONTROLLER.</p> <p>3. CONTROLLER SUBASSEMBLY (CSA) INCLUDES GFI, SWITCH, TERMINAL STRIPS WITH PLACARDS</p> <p>4. 120-VOLT SERVICE IN CONDUIT.</p> <p>5. OPTIONAL STRONGBOX RISER PEDESTAL. PED-18SS, PED-24SS.</p> | <p>6. PVC CONDUIT OUT TO CONTROL VALVES</p> <p>7. <math>\frac{3}{8}</math>" GRAVEL TO FILL INSIDE VOID AROUND CONDUITS IN QUICKPAD.</p> <p>8. STRONGBOX QUICKPAD DESIGNED TO ACCEPT ENCLOSURES AND SECURE INTO SOIL PN# QP-18, QP-24.</p> <p>9. QUICKPAD POLY MOUNTING BASE WITH COMPACTED SOIL TO SECURE.</p> |
|--|--|



STRONGBOX FRONT ENTRY

N.T.S.