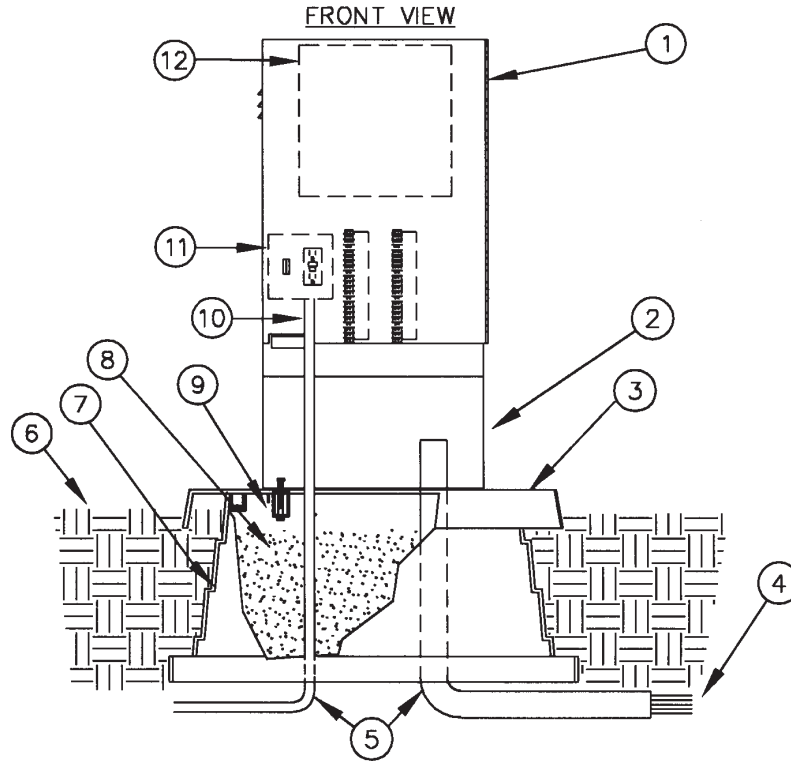


**QP Series**

**INSTALLATION DETAILS**



- |  |  |
|--|--|
| 1. Controller Enclosure  | 8. Fill inside base with pea gravel                                      |
| 2. Optional Pedestal   | 9. QuickPad fastening bracket (2)  |
| 3. QuickPad- 3/16" min. thickness aluminum powder coated preformed pad | 10. 120 volt service conduit   |
| 4. Direct burial control wires to control valves                       | 11. Controller sub-assembly (CSA) includes terminal strips with placards |
| 5. PVC long sweep ells   | 12. Automatic controller   |
| 6. Finish grade 2" below top of QuickPad                               |  |
| 7. QuickPad support base   |  |

**SPECIFICATIONS**

The controller enclosure mounting pad assembly shall consist of a reinforced plastic support base, a three sixteenth inch thick 5052 H32 Marine Grade Aluminum mounting pad and 304 grade stainless steel fastening brackets.

The support base shall be installed and compacted in earth allowing the top two inches of the support base to be exposed above the earth. The 5052 H32 Marine Grade Aluminum mounting pad shall be clamped to the support

base with the stainless steel fastening brackets. The controller enclosure shall be bolted from the inside of the enclosure to the mounting pad, thus preventing outside access to the mounting bolts.