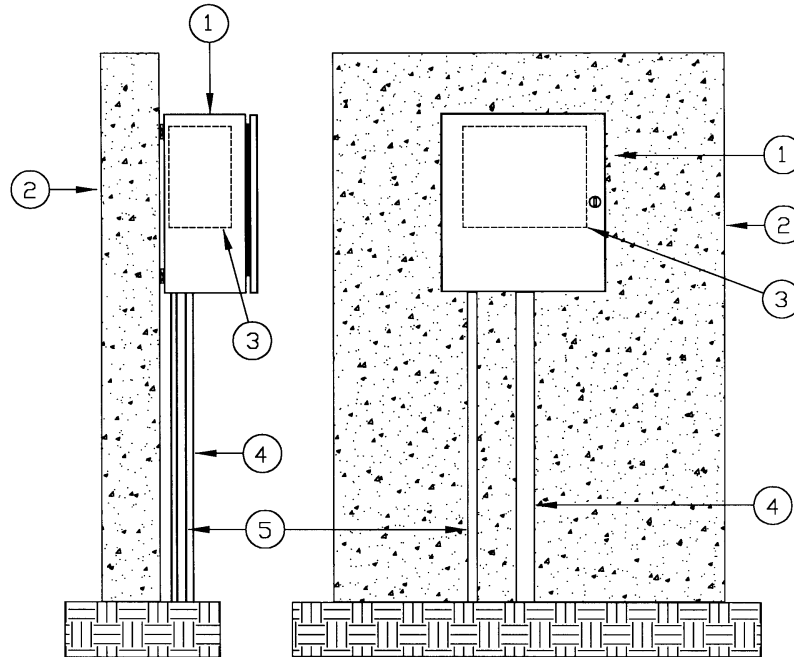


Light Duty Cabinet

Model: LD-18SW

INSTALLATION DETAILS



1. Controller cabinet
2. Wall
3. Automatic controller
4. 24-volt conduit
5. 120-volt conduit

Note:

Install controller cabinet to a wall as per manufacturer's installation instructions.

SPECIFICATIONS

The cabinet shall be of a weather resistant nature manufactured entirely of stainless steel. A stainless steel backboard shall be provided for the purpose of mounting electronic and various types of equipment. The backboard shall be mounted on four stainless steel bolts that will allow for removal of the backboard.

The cabinet door shall have a continuous stainless steel piano hinge on one side with a stainless steel cam style lock mounted in the door. The cabinet shall be manufactured with a continuous drainage channel which mates with a teardrop shaped, hollow center, watertight, thermoplastic door seal. The bottom of the cabinet shall be prepunched

for electrical conduit. The above described product shall be a NEMA TYPE 3R Rainproof Enclosure as listed by Underwriter Laboratories, Inc.