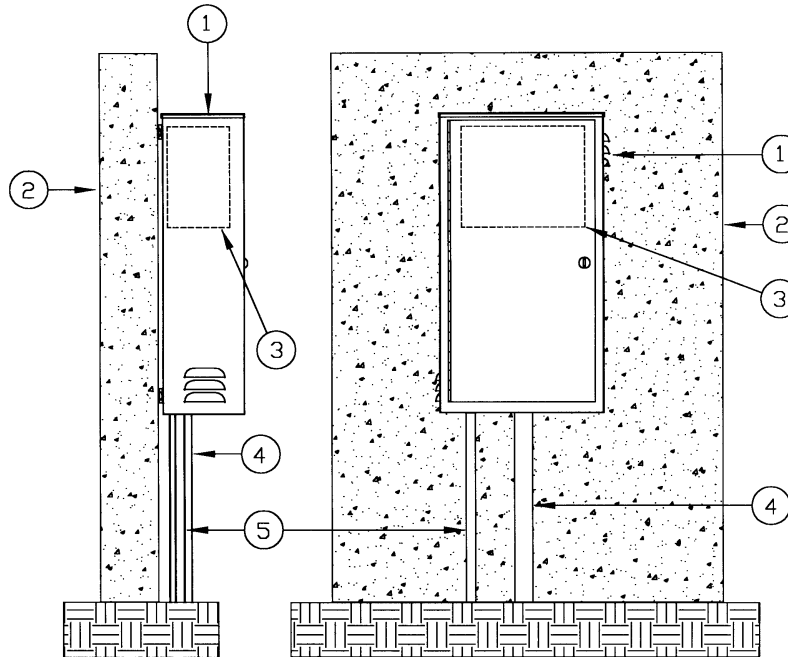


# Light Duty Cabinet

**Model: LD-16SW**

## INSTALLATION DETAILS



1. Controller cabinet
2. Wall
3. Automatic controller
4. 24-volt conduit
5. 120-volt conduit

**Note:**

Install controller cabinet to a wall as per manufacturer's installation instructions.

## SPECIFICATIONS

The cabinet shall be of a weather resistant nature manufactured entirely of stainless steel. The main housing shall be louvered to deflect against water spray, insects and dust. A stainless steel backboard shall be provided for the purpose of mounting electronic and various other types of equipment. The backboard shall

be mounted on four stainless steel bolts that will allow for removal of the backboard. The cabinet door shall have a continuous stainless steel piano hinge on one side with a stainless steel cam style lock mounted in the door. The cabinet shall be equipped with a teardrop, hollow center, watertight, thermoplastic door seal. The bottom of

the cabinet shall be prepunched for electrical conduit. The above described product shall be a NEMA TYPE 3R Rainproof Enclosure as listed by Underwriter Laboratories, Inc.