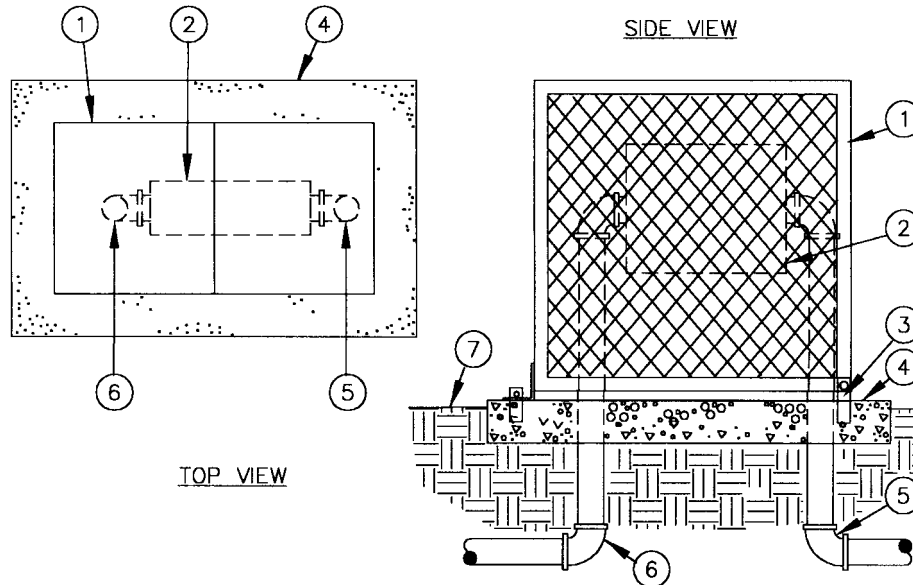


Backflow Cover

**Models: BC-30CR, BC-30CR-G,
BC-45CR, BC-45CR-G**

INSTALLATION DETAILS



- | | |
|---|--|
| <ol style="list-style-type: none"> 1. Expanded Metal Backflow Enclosure 2. Backflow Preventer 3. Anchor Rod (typical) 4. Poured Concrete Base – 6” minimum thickness – extend 4” beyond outside dimensions of enclosure | <ol style="list-style-type: none"> 5. Water Service Inlet Pipe 6. Water Service Outlet Pipe 7. Finish Grade |
|---|--|

SPECIFICATIONS

The backflow cover shall be of a vandal resistant nature manufactured of formed and expanded metal, coated with a performance polymer alloy coating to prevent handling injury. The cover shall have a hinge on one end and a locking tab on the other end. The hinge shall be attached to mounting brackets with carriage bolts to allow removal of the cover from

the hinges. The mounting brackets shall be submerged into the concrete a minimum of two inches, positioning the cover one and one half inches above the concrete. The locking tab shall accept a padlock. Handles shall be attached to the sides to facilitate raising and lowering of the cover. The cover shall be hot dipped in galvanized metal having not less than

1.2 ounces per square foot on cleaned cold rolled steel cage. All welds shall be brushed and cleaned to remove slag that may interfere with galvanize adherence. Galvanized cage then powder coated per standards not less than 2.5 mils on any part of enclosure.